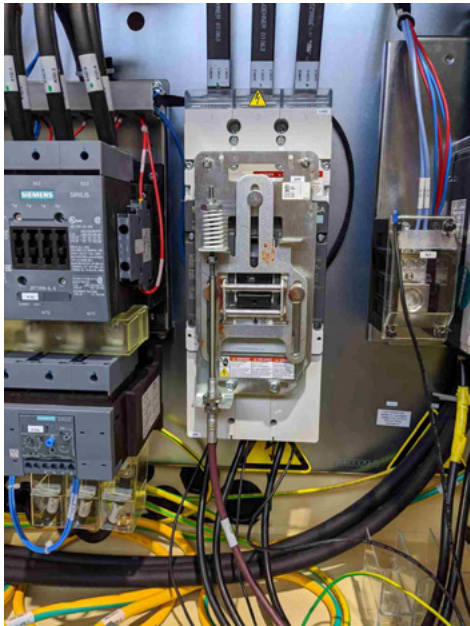


Machine Upgrades

Motion Lock Out - PET

Provide a lockable disconnect that locks out the hydraulic pump motor, EOAT motor and CoolPik motor while allowing machine heats to remain on, or in standby mode.



Contact Husky for enquiry:

Asia Pacific: apafms@husky.ca
North & South America: lscamer@husky.ca
Europe & Africa: afmaemea@husky.ca

Category

- Performance & Productivity Improvements
- Reduced Energy
- Improved Maintainability
- Obsolescence Management

Upgrade Benefits

An auxiliary contact is added to the motor disconnect that removes power to the hydraulic motor control circuit when the motion disconnect is turned off.

Includes:

The motion disconnect circuit breaker with auxiliary contact, breaker disconnect kit, nameplate, distribution block/jumper.

Installation Instructions

It is recommended that the installation be performed by a Husky Service Technician

Product Line Affected

- HyPET
- GPET

COMMITMENT

Made, Delivered, and **Maintained™**

* HUSKY is a registered trade-mark of Husky Injection Molding Systems Ltd. in the United States and other countries, and may be used by certain of its affiliated companies under License. All HUSKY products or service names or logos referenced in these materials are trade-marks of Husky Injection Molding Systems Ltd. and may be used by certain of its affiliated companies under License. © 2017 Husky Injection Molding Systems Ltd. All rights are reserved.

Disclaimer: Information is made available in this flyer "as is" and no warranties are given or liabilities of any kind are assumed with respect to the quality of such Information, including, but not limited to, its fitness for a purpose, non-infringement of third party rights, accuracy, completeness or its correctness. Except as set forth in Husky's written warranty, Husky makes no additional warranties, whether express, implied or statutory. Certain conditions may apply. For more details please request a copy of Husky's written warranty and Standard Terms and Conditions."